

LEARNING STANDARDS

Gifted resource instruction is aligned to:

- Literacy Standards (ELA & Writing)
- ISTE Standards (International Society for Technology in Education)
- STEM (Science, Technology, Engineering & Math)
- MO Gifted Learner Standards



LEARN MORE

Visit our website:
www.slps.org/gifted



Contact Us

Natasha Mitchell | Director Gifted Education
Email: natasha.mitchell@slps.org
Phone: 314-536-4858

Shelice Hardin | Gifted Education Secretary
Email: shelice.hardin@slps.org
Phone: 314-345-4548

ST. LOUIS PUBLIC SCHOOLS GIFTED RESOURCE PROGRAM



Mission:

The St. Louis Public Schools Gifted and Talented team ensures a transparent and equitable identification process. We provide a learning community that maximizes the potential and unique capabilities of all gifted learners.

LEARNING SCHEDULE

Weekly Instruction:

- Gifted identified students are eligible to receive 150 minutes per week of direct gifted instruction.
- Instructional time may include face-to-face instruction combined with independent learning tasks.

2024-2025 School Year Project Based Learning (PBL) Cycles:

- **PBL 1:** Creative Thinking & Communication (Sep 16 – Nov 29)
- **PBL 2:** Complex Reasoning & Affective Processing (Dec 2 – Feb 28)
- **PBL 3:** Global Mindedness (March 3 – May 16)



GIFTED RESOURCE FAQs



What is Gifted Resource & how does it work?

Gifted Resource is small group, targeted gifted instruction provided by a certified Gifted Education Specialist.

Gifted identified students in KG–8th grade are pulled out of regular classroom instruction to engage in gifted instruction during the school day for approximately 150 minutes per week.

How will students benefit from the Gifted Resource Program?

Our program is designed to nurture students' gifts and talents by providing opportunities to explore real-world problems through inquiry-based learning. This approach fosters creativity, critical thinking, and problem-solving skills; preparing them for college, career, and beyond.

What about grades and assignments in the regular classroom?

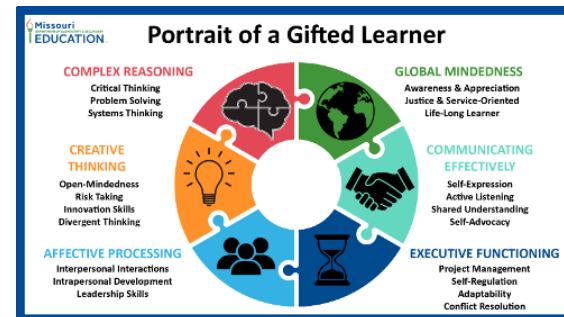
Students participating in gifted instruction are exempt from classroom assignments that occur during gifted resource time. (Classroom grades should be aligned to standards mastery rather than activity completion.)

Gifted resource instruction is aligned with high leverage literacy and STEM standards to ensure the programming is supporting core content. If a student is struggling in a specific content area, the gifted schedule may be revisited.

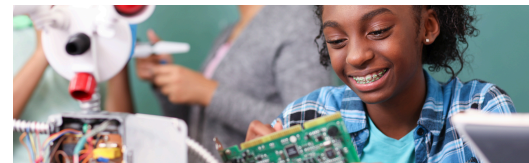
ASSESSING LEARNING

Quarterly Progress Reports

- Progress is tracked each quarter and aligned with the "*Portrait of a Gifted Learner*."
- Gifted Progress Reports are shared with the parents, students, and school teams.



Student Portfolios



- All students will have learning portfolios that are developed over the course of the school year.
- Portfolios will contain artifacts of learning for all PBLs, including final products.
- Student portfolios are shared with parents every quarter.